

CONCRETE FINGERS



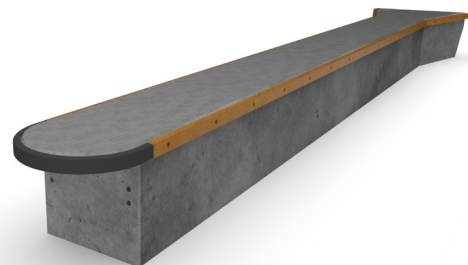
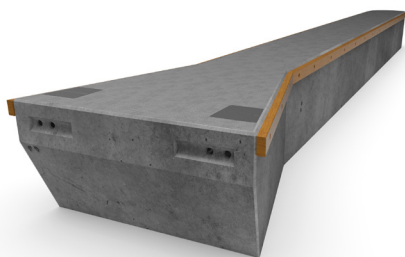
SF MARINA's all-concrete finger provides the highest possible standard and comfort. -The weight and the design of the concrete fingers make them extremely sturdy to walk on and very secure for mooring of yachts. -The concrete fingers are designed to be used together with our concrete pontoons. -The fingers are connected to the walkway-pontoon with our patented connectors. For sheltered locations all our concrete fingers are designed for "stand alone" installations, only connected to the walkway pontoon. For exposed locations fingers of 15 & 18m should be secured/anchored at the outside end of each finger.

-The reinforced concrete and Styrofoam design of the finger produces very high buoyancy thus making it virtually unsinkable. Please note, if disconnecting a finger, the centre of gravity is very high. -The concrete fingers are designed for handling yachts 1,2 x the length of the finger. (An 18m finger => yachts up to 22m)

-The high quality materials, coupled with a thorough manufacturing process, ensure that the finger enjoys a very long life-span.

-The fingers are built to withstand storms and harsh winters.

-Our fingers are practically maintenance-free and have little or no impact upon Nature and the Environment.



SPECIFICATIONS

The fingers are manufactured in accordance with the Swedish Concrete Standards BBK04

| | |
|------------|---|
| Length: | 10m, 12m, 15m and 18m |
| Width: | Incl. Fender 1.34 m |
| Width: | Excl. Fender 1.2 m |
| Y-width: | 2.4 m |
| Height: | 1.2 m as standard, (1,5m option) |
| Weight: | 9 tons, 10 tons, 13 tons and 17 tons (based on 1,2m height) |
| Freeboard: | 0.5 m (0,6m option) Connector: W200 for 10m & 12m, (Breaking load 35ton/wire) W250 for 15m & 18m. (Breaking load 2x35 tons) |
| Lashing: | For transportation 4pcs M24 stainless cast-ins in the outside end and connector boxes used on the inside. |

All-concrete finger: Concrete: C40/50. Air 6%. Wcr < 0.4. Reinforcement: Nps 500, B500. Extruded polystyrene foam EPS60: min. 60kPa. Cast-in materials: Stainless and hot-dipped galvanised steel. Wood fender: NTR-A pressure-treated pine 70 x 145 mm. Other dimensions offered upon request. We reserve the right to change the design without notifying.